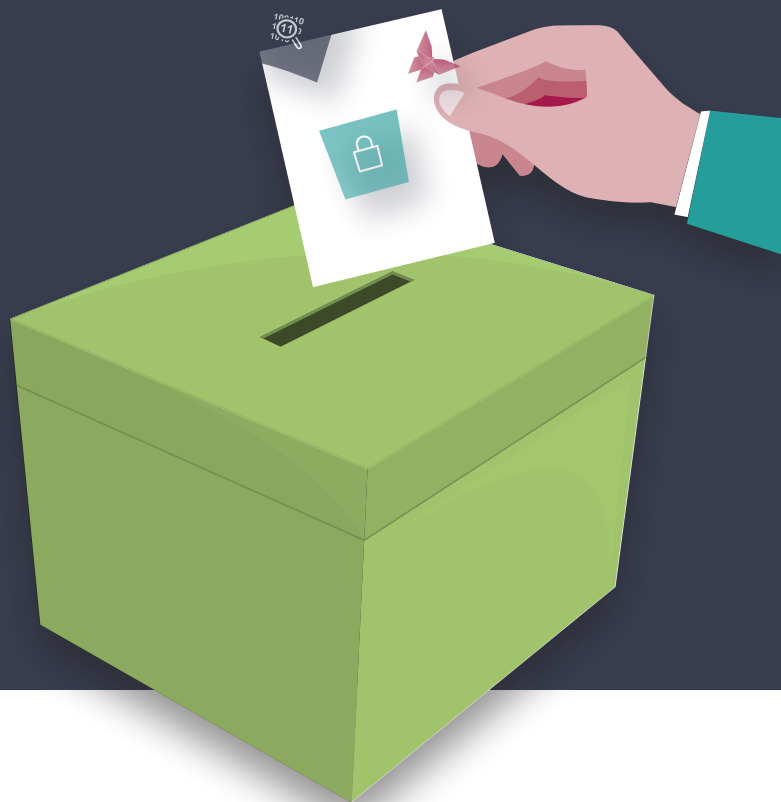


m^ps



electoral services



let's talk elections & electoral registration

Your electoral communications, documentation and supporting processes need to be accurate, secure and compliant. Our considerable expertise in this sector will reduce your workload and your costs, while ensuring the strictest levels of security and compliance.



Our end-to-end solution means that we've got every step in the process covered: data, document composition, mail sortation, print and mail to optimise cost and performance, from bulk IER, daily and weekly productions to by-elections.



Our innovative production plant uses new, state-of-the-art technology to optimise your communications, giving you more accuracy and security, better results, and saving you money.



We share industry best practices from our private sector clients to help you make the most of our print innovations, contingency planning, business continuity and capacity.



Our sure-fast contingency means we can guarantee precision-timed, day-definite delivery and same-day turnaround, pre-empting any potential hold-ups, and making sure they're covered.



We assure your data's integrity from when it arrives via our secure File Transfer Protocol, while our expert account managers handle it keeping a full audit trail, to when we destroy or archive it to meet compliance.

Our total integrity leaves no gaps, with all our staff being subject to full disclosure checks, full DR and continuity procedures, and fully accountable ISO 27001 and ISO 9001 processes and accreditations.



Our personal approach through dedicated account management gives you flexibility and peace of mind that your priorities are being met, effectively, efficiently and securely.

we speak your language

Whether you're getting ready for local, Mayoral, PCC, Parliamentary elections or electoral registration, our team at MPS guarantees the highest standards for the full suite of electoral communications for local government and joint boards.

We've got an impressive track record in printing IER forms, poll cards, ballot papers and innovative postal voting packs. Our experience and innovation means we can evolve our mailing solutions to make them even more secure, compliant and friendly to your budget and the environment. For example, our unique postal vote reply envelope allows voters to return more than one ballot paper, perfect for combined elections.

Right from the outset, our expert team gives every electoral project the benefit of its experience across all the major EMS systems. Our dedicated account managers and IT professionals have the sector know-how to seamlessly get you up and running.

why mps should get your vote

- ▶ Lower costs
- ▶ Robust security thanks to our ISO 27001 certification
- ▶ Quick turnaround
- ▶ One convenient solution
- ▶ Dedicated account management
- ▶ 100% accurate mailings
- ▶ Quality control audits
- ▶ Bulk postal discounts
- ▶ Peace of mind



12-14 Cattlemarket, Chew Road,
Winford, Bristol BS40 8HB

- ▶ Orders: sales@mpsukltd.com
- ▶ Quotes: quote@mpsukltd.com
- ▶ General: enquiries@mpsukltd.com
- ▶ 01275 474354
- ▶ www.mpsukltd.com

30
YEARS
IN THE INDUSTRY